

# A. Handles, Pull-Handles (1/2)

Version 20.09.2006



Handle 400 001  
Steel, yellow zinc plated  
Rubber grip: Ø 14 mm



Handle 400 002  
Stainless steel  
Rubber grip: Ø 14 mm



Handle 400 038  
Steel, yellow zinc plated  
Rubber grip: Ø 20 mm



Handle 400 120  
Steel, zinc plated  
Rubber grip: Ø 20 mm



Handle 400 122  
Steel, black  
Rubber grip: Ø 20 mm



Handle 400 005  
Steel, yellow zinc plated  
Rubber grip: Ø 14 mm



Handle 400 009  
Stainless steel  
Rubber grip: Ø 14 mm



Handle 400 039  
Steel, yellow zinc plated  
Rubber grip: Ø 20 mm



Handle 400 125  
Steel, zinc plated  
Rubber grip: Ø 16 mm



Handle 400 127  
Steel, black  
Rubber grip: Ø 16 mm

## A. Handles, Pull-Handles (2/2)

Version 20.09.2006



Handle 10 53  
Steel, zincod  
Rubber grip: Ø 19 mm



Handle 10 78  
Steel, zincod  
Rubber grip: Ø 19 mm



Strap handle 400 007  
Plastic



Handle 400 015  
Plastic, black



Pull-handle 400 089  
Plastic, black



Pull-out-handle 400 090  
1 stage extendable



Pull-handle 400 123  
Length: 175 mm  
Steel, zincod



Pull-handle 400 124  
Length: 245 mm  
Steel, zincod



Pull-out-handle 400 110  
2 stages extendable



Pull-out-handle 400 091  
With wheels  
3 stages extendable



Pull-out-handle 400 118  
Recessed  
3 stages extendable



Pull-out-handle 400 040  
Recessed  
1 stage extendable

# B. Catches

Version 20.09.2006



Catch 400 022  
Steel, yellow zined



Catch 400 023  
Stainless steel



Catch 400 128  
Steel, zined



Catch 400 024  
Steel, yellow zined



Catch 400 025  
Stainless steel



Catch 400 132  
Steel, zined



Butterfly Catch 400 051  
Stainless steel



Butterfly Catch 400 053  
Steel, zined



Catch 400 072  
Stainless steel



Suitcase Hasp 400 019  
zined  
lockable



ART.-Nr. 400 074  
Steel, zined



Art.-Nr. 400 077  
Steel, zined  
lockable

# C. Hinges

Version 20.09.2006



Hinge 400 011  
Stainless steel  
50 mm x 48 mm;  $\varnothing$  5,2



Hinge 400 012  
Stainless steel  
50 mm x 48 mm;  $\varnothing$  4,2



Hinge 400 013  
Stainless steel  
50 mm x 100 mm



Hook over hinge 400 021  
Steel, zined  
58 mm x 48 mm

## D. Lid Stays

Version 20.09.2006



Webbing lid stay 400 010  
PP webbing



Wire lid stay 400 031  
Stainless steel



Lid stay 400 035  
Big



Lid stay 400 036  
Small



Gas springs  
Outside as well as inside the container  
mountable



# E. Embossings/Inscriptions

Version 20.09.2006



**Moulded-in letters**  
Standard size  
Capital letters, height: 30 mm



**Moulded-in letters**  
Special sizes  
Height of letters: up to 100 mm



**Moulded-in logos**  
According to customer`s indications



**Screenprint**  
According to customer`s indications



**Stamping**  
According to customer`s indications



**Lables**  
According to customer`s indications

## F. Wheels/Castors

Version 20.09.2006



Wheel 400 026  
Ø 50mm  
Save running load per set: 25 kg



Wheel 400 033  
Ø 50mm  
Save running load per set: 35 kg



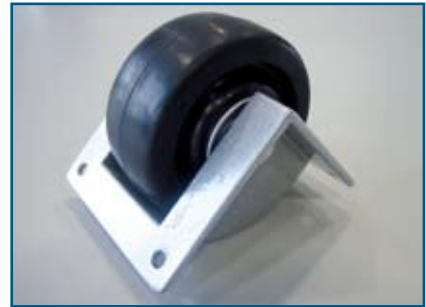
Wheel 400 034  
Ø 80mm  
Save running load per set: 80 kg



Transport Castor 400 085  
Double castor  
Save running load per set: 80 kg



Transport Castor 400 085 E  
Single castor  
Save running load per set: 80 kg



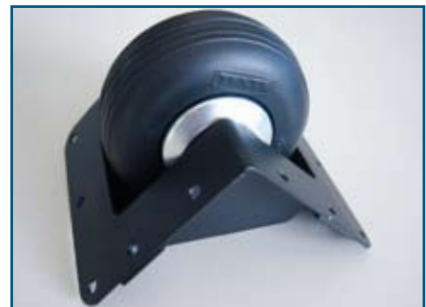
Wheel 400 098  
Ø 75 mm  
Save running load per set: 100 kg



Swivel Castor 400 065  
Ø 75 mm  
Save running load per piece: 50 kg



Swivel Castor 400 066  
Ø 75 mm  
With brake  
Save running load per piece: 50 kg



Wheel 400 097  
Ø 80 mm  
Save running load per set: 100 kg



Swivel Castor 400 100  
Ø 100 mm  
Save running load per piece: 50 kg



Swivel Castor 400 101  
Ø 100 mm  
With brake  
Save running load per piece: 50 kg

## G. Miscellaneous (1/2)

Version 20.09.2006



Pressure regulator 400 064



Pressure regulator 400 063  
With flexible tube



Pressure regulation valve 400 043  
With push button



Humidity indicator 400 044



Security hasp 400 017  
Chromium plated



Padlock hasp 400 016



Sealing holder 400 029



Pallet feet 400 050  
Ø 100 mm, height: 100 mm



Rubber foot 400 055  
(Several types)



Shock indicator 400 115/400 116  
Drop(N) Tell 25G/50G  
Shows improper treatment during the  
transportation



## G. Miscellaneous (2/2)

Version 20.09.2006



Art.-Nr. 400 096/400 133  
 Document holder A6  
 400 096: opaque  
 400 133: transparent



Document pockets  
 4 versions (s. to the right):

Art.-Nr. 400 060  
 Document pocket  
 Dimensions: 245 x 315 [mm]  
 For paper size: 190 x 260 [mm]

Art.-Nr. 400 067  
 Document pocket  
 Dimensions: 195 x 260 [mm]  
 For paper size: 150 x 210 [mm]  
 (DIN A 5)

Art.-Nr. 400 068  
 Document pocket  
 Dimensions: 155 x 200 [mm]  
 For paper size: 105 x 150 [mm]  
 (DIN A 6)



Records holder 400 041  
 Small  
 Inside dimensions:  
 Ø 43mm, length: 233 mm



Records holder 400 042  
 Big  
 Inside dimensions:  
 Ø 85mm, length: 300 mm

Art.-Nr. 400 102  
 Document pocket  
 Dimensions: 255 x 155 [mm]  
 For paper size: 210 x 115 [mm]  
 (DIN C 4)

## H. Special Container Versions

Version 20.09.2006



**IP54**  
 Watertight version according to protection degree IP54 (DIN EN 60529). Container is sealed additionally and equipped with a pressure regulator 400 064.



**Removable lid**  
 All containers are available with removable lids.



**Trolley version**  
 Nearly all containers can be delivered as a Trolley. Depending on the dimensions of the container and the conditions it is in use, different wheels, pull-handles and pull-out handles are available.